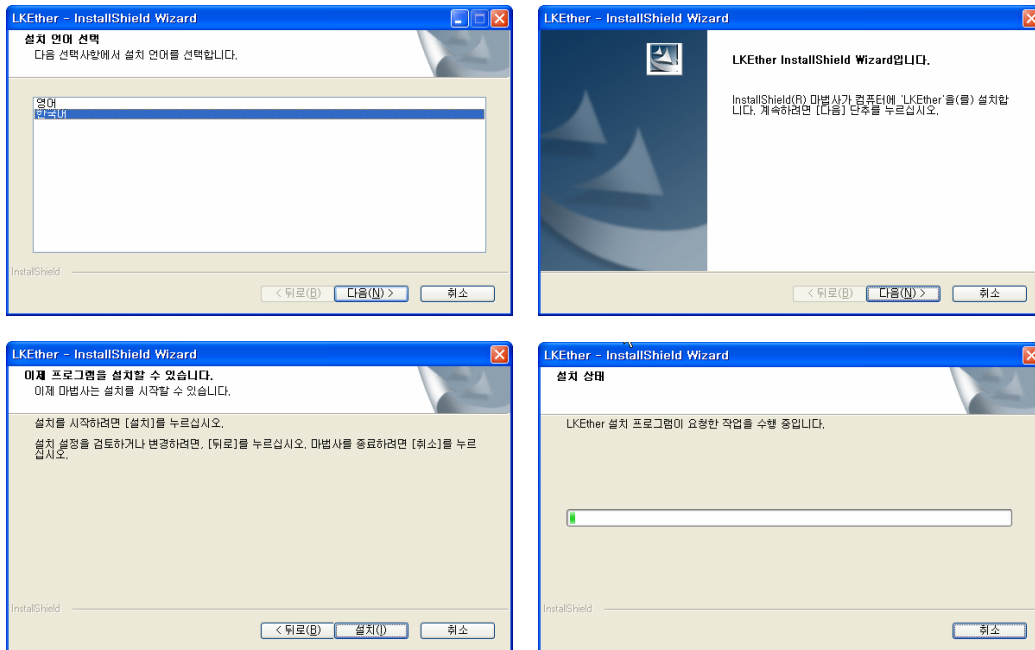
	Subject		version	1.0
			Shin Gi Chang	

# Ethernet configuration Program Usage

Written by G.C. Shin

## 1. Installation

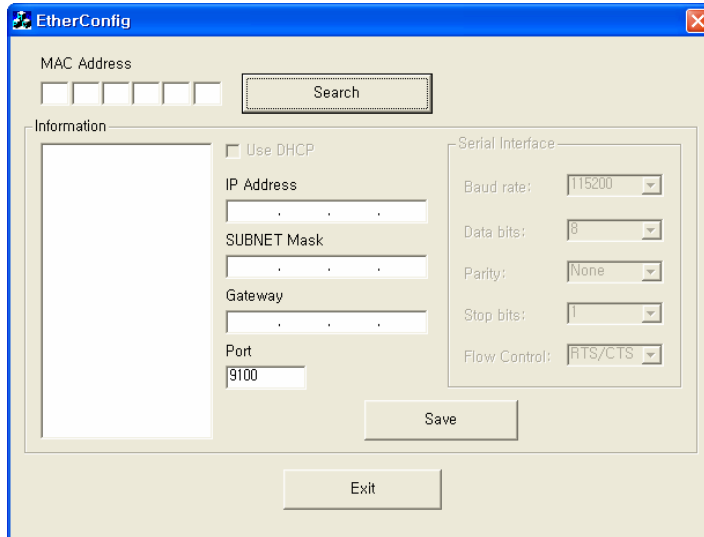
Execute the program " LKEther\_v1xx.exe " to install.



	Subject		version	1.0
			Shin Gi Chang	

## 2. Program Execute

After installation, please execute the program(Start → LUKHAN → LKEther → EtherConfig).

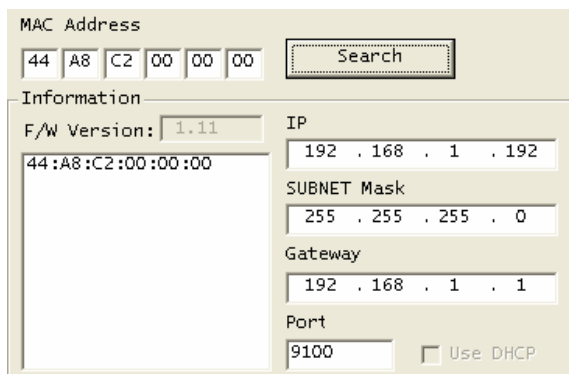


## 3. How to use – Search

First of all, you need to search the Ethernet card. There are 2 methods.

- 1) Input the MAC address to search the Ethernet card
- 2) Just click the " Search " button to search the Ethernet interface card without MAC address input.

This is the 2<sup>nd</sup> method using " Search " button without MAC address input.



When it completed the search, the data of the Ethernet interface card such as IP, subnet, gateway, MAC information etc will be displayed.

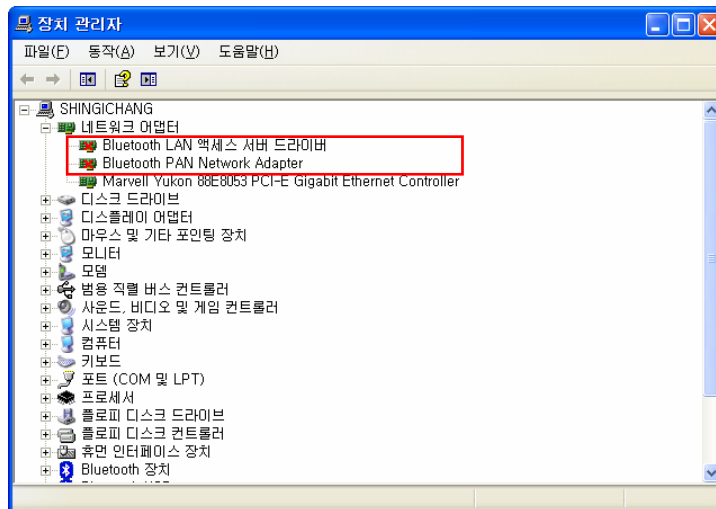
## 4. How to use – Save

When you search the Ethernet card, it is available to change the IP, subnet, gateway etc based on the request. After change any data, please click the " Save " button to save the new data on the Ethernet card. You may check the data through the self testing message.

	Subject		version	1.0
			Shin Gi Chang	

## 5. Remark

- In the existing configuration program, there is a button for reading & saving for serial interface information. This is not activated yet.
- DHCP setting function is not applied yet.
- If you can not search any Ethernet card through the Configuration program, please go to the system administrator and check the Network adapter list.



- If there is Bluetooth Network adapter on the list as above, there is a possibility it can not search the Ethernet card. In this case, please set the Bluetooth Network adapter NOT top be used. After that, please try again.