

---

---, ---

---, --- ---

Comment: ---

Operator: WELCOM

Order number: ---

Aperture: 5 mil, 0.127 mm

Wavelength: 660/45° Q

Lens: Pentax 35mm

Unit: Micrometer[μm]

Date: 7/1/2013 3:03:42 PM

Device: REA MLV-2D (V.1.0.16.0/11923r)

Serial Number: 0030.025.100-00833-7

**Symbology: Codabar**  
**Code Content: b123456b**

User comment:

Customer device

Ser.no.calibration card:497

Evaluation: ISO/IEC 15416, ANSI/AIM BC3 1995

**Symbol: Pass 4.0/05/660/45° Q**

Selected grade: 2.5 (B)

SRP grade: 4.0 (A)

Decode:				4
Symbol contrast:	86%	min 55%		4
Edge Contrast:	67%	min 15%		4
Modulation:	78%	min 60%		4
Rmin/Rmax:	4%	max 50%		4
Defects:	6%	max 20%		4
Decodability:	84%	min 50%		4

Bar deviation: 0%

**Optional Parameters**

PCS(SC):	0.95	min 0.75		4
Bright value(Rmax):	90%	min 25%		4
Dark value(Rmin):	4%	max 45%		4
PCS(ECMin):	0.90	min 0.75		4
Bright value(Rs):	74%	min 25%		4
Dark value(Rb):	7%	max 37%		4
Bar:	-20%	25%	-100%/+100%	4
Space:	-35%	15%	-100%/+100%	4
P-Value:	-15%	10%	-100%/+100%	4
Mean:		1%	-100%/+100%	4
Z-Module:		250	min 191	4
Ratio:	2.570		2.000/3.000	4
CPI:	7.900			

---  
 ---, ---  
 ---, --- ---  
 Comment: ---

Operator: WELCOM  
 Order number: ---  
 Aperture: 5 mil, 0.127 mm  
 Wavelength: 660/45° Q  
 Lens: Pentax 35mm  
 Unit: Micrometer[μm]  
 Date: 7/1/2013 3:03:42 PM  
 Device: REA MLV-2D (V.1.0.16.0/11923r)  
 Serial Number: 0030.025.100-00833-7

Detailed evaluation:  
 B = Bar, S = Space, E = Bar + Space  
 C = Char, CS = Char set, SCV = Value  
 P = P-value, V = Decodability[%], G = Gap

C	B S P	B S V	B S CS	B G SCV
	0%	-5%	0%	25%
b	-20%	-35%	10%	241
	-15%	84%		17
	-5%	-5%	15%	15%
	5%	5%	-20%	245
1	5%	85%		1
	-5%	-10%	10%	25%
	5%	-10%	-5%	241
2	5%	85%		2
	15%	5%	0%	0%
	0%	10%	5%	246
3	10%	89%		3
	10%	20%	-10%	-20%
	-5%	15%	0%	258
4	0%	88%		4
	10%	-15%	-5%	10%
	15%	15%	-15%	250
5	5%	86%		5
	-15%	-10%	-10%	10%
	5%	10%	15%	254
6	0%	94%		6
	0%	0%	-10%	15%
	-15%	-20%	5%	
b	-15%	87%		17

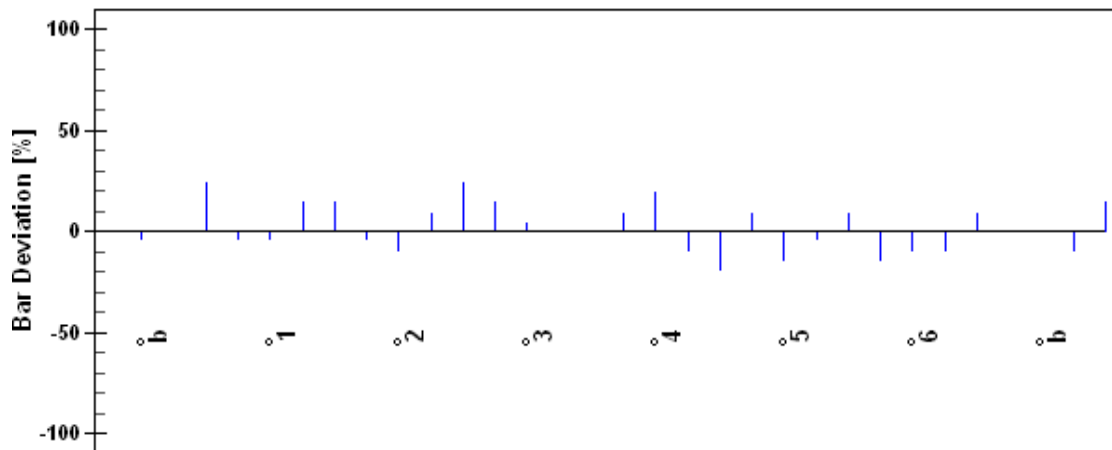
---  
---, ---  
---, --- ---  
Comment: ---

Operator: WELCOM  
Order number: ---  
  
Aperture: 5 mil, 0.127 mm  
Wavelength: 660/45° Q  
Lens: Pentax 35mm  
Unit: Micrometer[μm]  
Date: 7/1/2013 3:03:42 PM  
Device: REA MLV-2D (V.1.0.16.0/11923r)  
Serial Number: 0030.025.100-00833-7

**Table of codewords**

17	1	2	3	4	5	6	17
b	1	2	3	4	5	6	b

**Histogram:**



---  
---, ---  
---, --- ---  
Comment: ---

Operator: WELCOM  
Order number: ---  
Aperture: 5 mil, 0.127 mm  
Wavelength: 660/45° Q  
Lens: Pentax 35mm  
Unit: Micrometer[ $\mu$ m]  
Date: 7/1/2013 3:03:42 PM  
Device: REA MLV-2D (V.1.0.16.0/11923r)  
Serial Number: 0030.025.100-00833-7

**Barcode reflectance profile:**

